

11/04/13 Agenda:

- Review Practice NGA
- Review Worksheet 4 - Congruent Triangles
- Review Sections 4.1, 4.2, & 4.7
- Tuesday
 - Quiz on 4.1, 4.2, & 4.7

- Quiz Tomorrow - Sections 4.1, 4.2, & 4.7

- Section 4.1

- Classifying Triangles

- Angle Sums

- Section 4.2

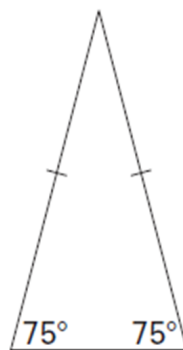
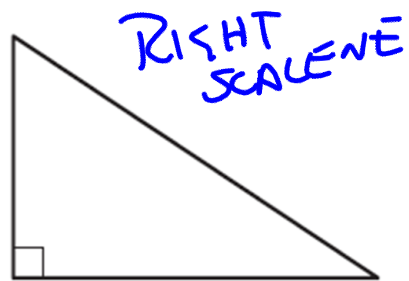
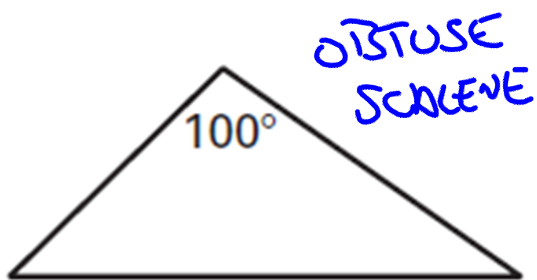
- Congruent Triangles

- Section 4.7

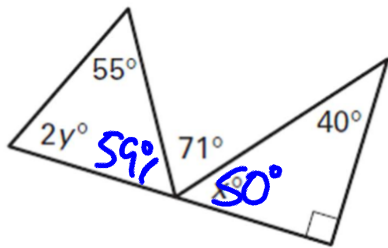
- Isosceles Triangles

- Equilateral Triangles

classify the following triangles by sides and angles



Challenge – find X and Y



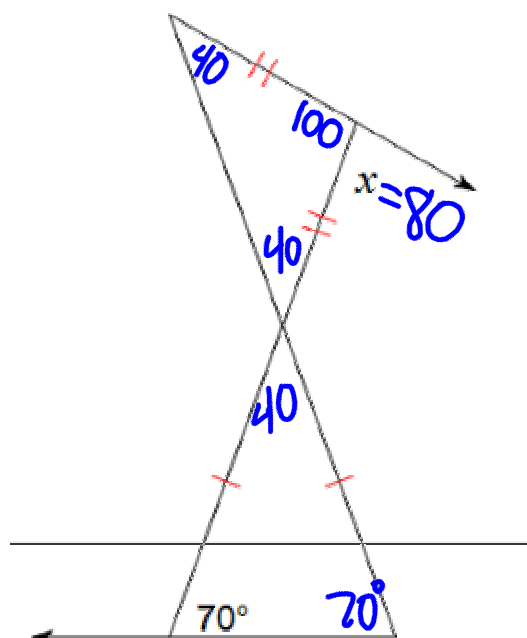
$$2y + 55 + 59 = 180$$

$$2y + 114 = 180$$

$$2y = 66$$

$$y = 33$$

Find the value of x .



$$x = 80^\circ$$

Section 4.2 - Congruent Triangles

Target 4D

Write a congruence statement for the triangles. Identify all pairs of congruent corresponding parts.

$$\triangle JKL \cong \triangle TSR$$

